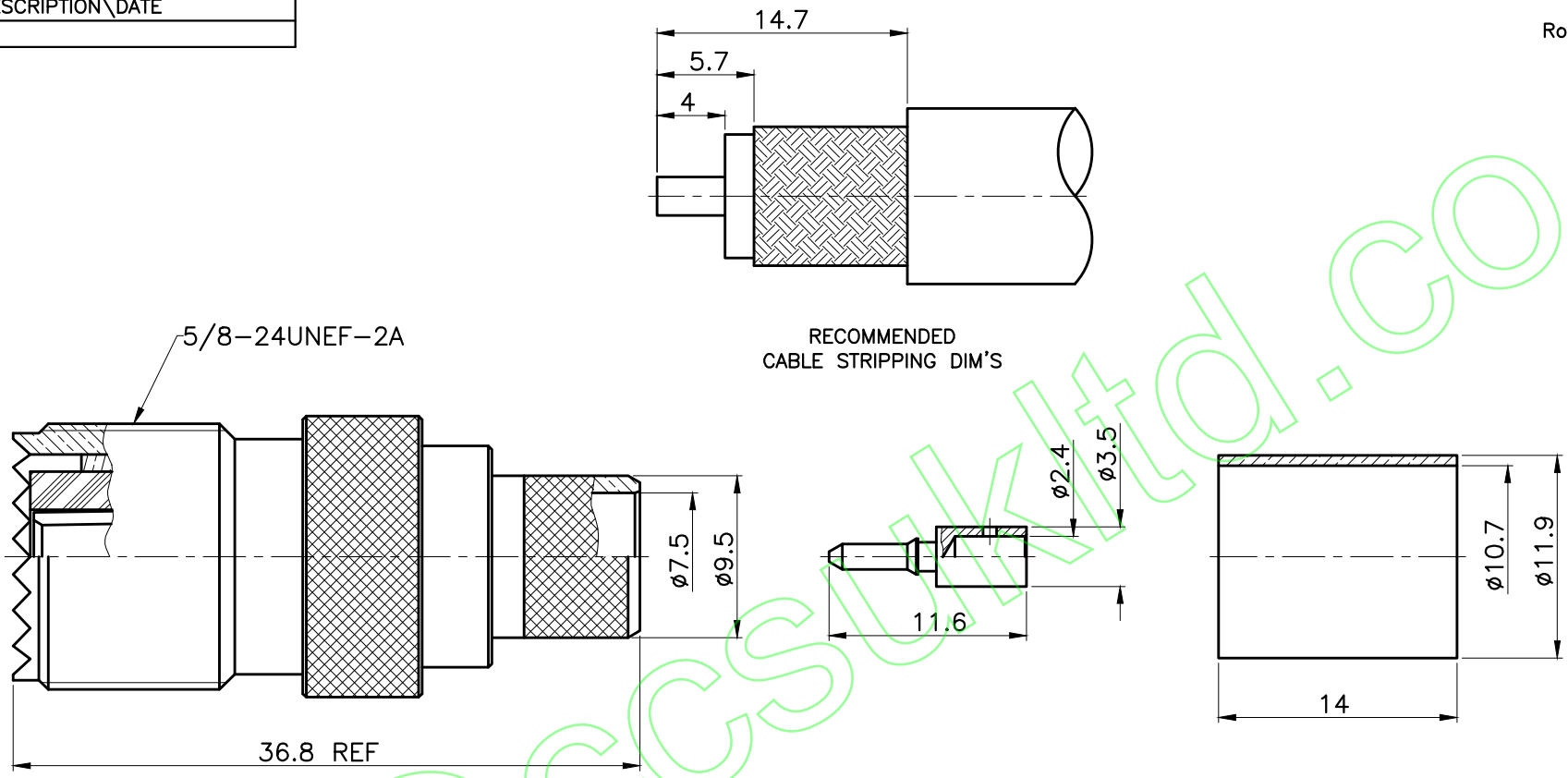


REVISIONS	
ISS	DESCRIPTION\DATE
1	

RoHS COMPLIANT



1. CRIMPED FERRULE
HEX CRIMP SIZE .429"
2. CONTACT PIN TO SOLDER



TITLE: UHF FEMALE CRIMP (FOR RG213)		APRD:	UNLESS OTHERWISE SPECIFIED TOLERANCES 0.5-6 = ±0.2 >6-30 = ±0.4 >30-120 = ±0.6 >120-315 = ±1 >315-1000 = ±1.6 ANGLES = ±5°			
PART NO: UJCR213		CHKD:		FERRULE	BRASS	NICKEL
DRAWING NO: 029		DR:		CONTACT PIN	BRASS	GOLD
DATE: 04/02/15"		UNIT: mm	CONTACT PIN	BRASS	GOLD	
SHEET: .		SCALE: 2.5/1	INSULATOR	DELIRIN	WHITE	
			BODY	BRASS	NICKEL	
			NO. DESCRIPTION	MATERIAL	FINISH	