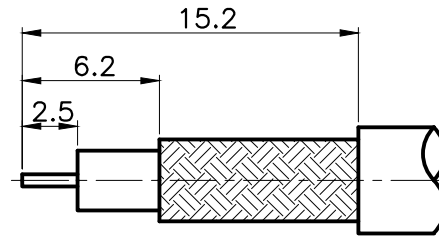
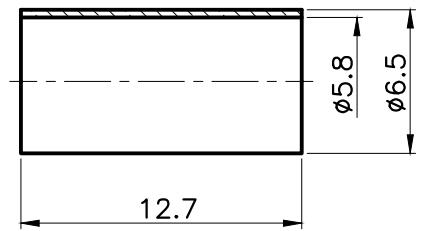
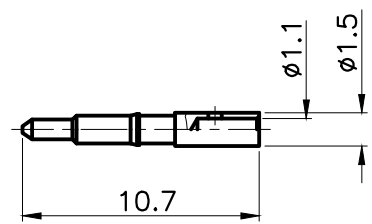
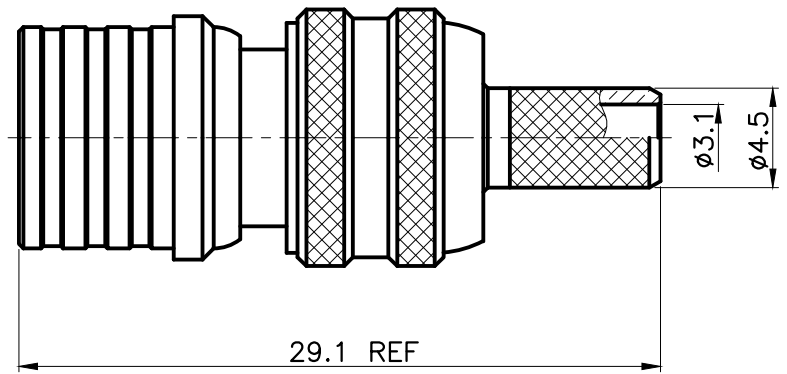


REVISIONS	
ISS	DESCRIPTION\DATE

RoHS COMPLIANT



RECOMMENDED
CABLE STRIPPING DIM'S



1. CRIMPED FERRULE
HEX CRIMP SIZE .217"



TITLE: QMA MALE CRIMP
(FOR RG223/U)

PART NO: QLAPCR223

DRAWING NO:

APRD:

CHKD:

DR:

DATE: 06/15/22"

SHEET: .

UNLESS OTHERWISE SPECIFIED TOLERANCES
0.5-6 = ±0.2
>6-30 = ±0.4
>30-120 = ±0.6
>120-315 = ±1
>315-1000 = ±1.6
ANGLES = ±5°

UNIT: mm

SCALE: 3/1

NO.	DESCRIPTION	MATERIAL	FINISH
	O RING	SILICONE	RED
	FERRULE	BRASS	NICKEL
	CONTACT PIN	BRASS	GOLD
	BODY	BRASS	NICKEL
	BODY	BRASS	NICKEL
	INSULATOR	TEFLON	WHITE
	BODY	BRASS	NICKEL
	BODY	BRASS	NICKEL
	SHELL	BRASS	NICKEL