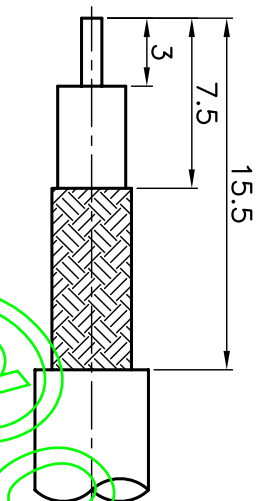
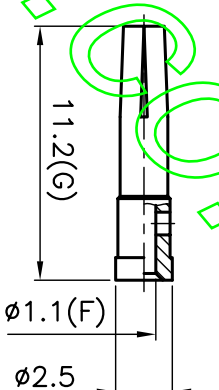
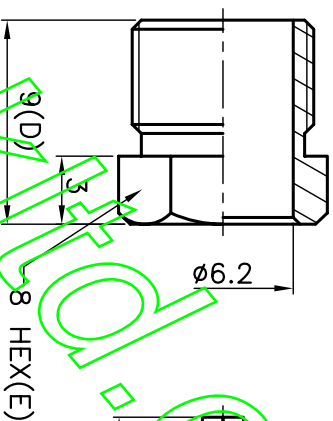
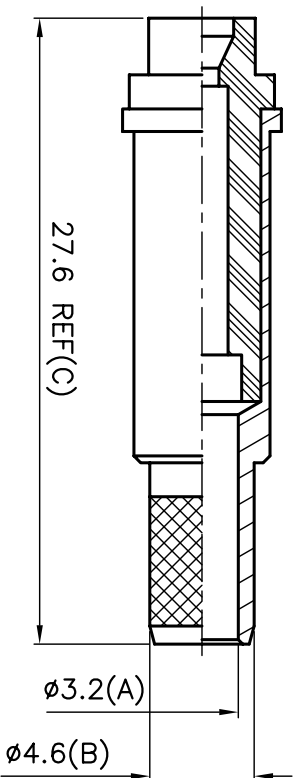


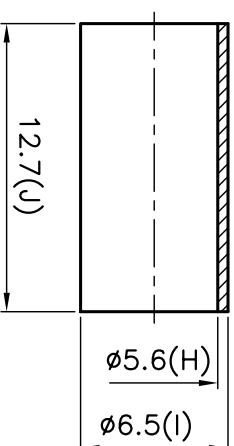
ISS	REVISIONS	DESCRIPTION \ DATE

RoHS COMPLIANT



RECOMMENDED
CABLE STRIPPING DIM'S

1. CRIMPED FERRULE
HEX CRIMP SIZE .213"
2. CRIMPED CONTACT PIN
HEX CRIMP SIZE .068"



CONNECTORS CABLES
CRIMPS
SPECIALISTS LTD.

TITLE: FME FEMALE CRIMP
(FOR RG58)

PART NO: FMEJCR58
DRAWING NO: 30

APRD:	UNLESS OTHERWISE SPECIFIED TOLERANCES 0.5-6 = ±0.2 >6-30 = ±0.4 >30-120 = ±0.6 >120-315 = ±1.1 >315-1000 = ±1.6 ANGLES = ±5°							
CHKD:		FERRULE	BRASS	NICKEL	KA/2005/10527 \	KA/2005/60362		
DR:		CONTACT PIN	BRASS	GOLD	KA/2005/10527 \	KA/2005/30993		
DATE: 11/24/06"		NUT	BRASS	NICKEL	KA/2005/10527 \	KA/2005/60362		
UNIT: mm		INSULATOR	DELRI	WHITE	KA/2005/10531			
SCALE: 3/1		BODY	BRASS	NICKEL	KA/2005/10527 \	KA/2005/60362		
SHEET: .		NO. DESCRIPTION	MATERIAL	FINISH	SGS REPORT NO			