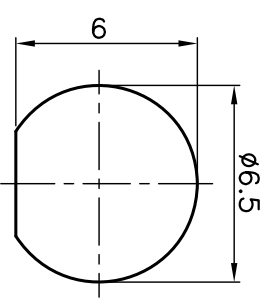
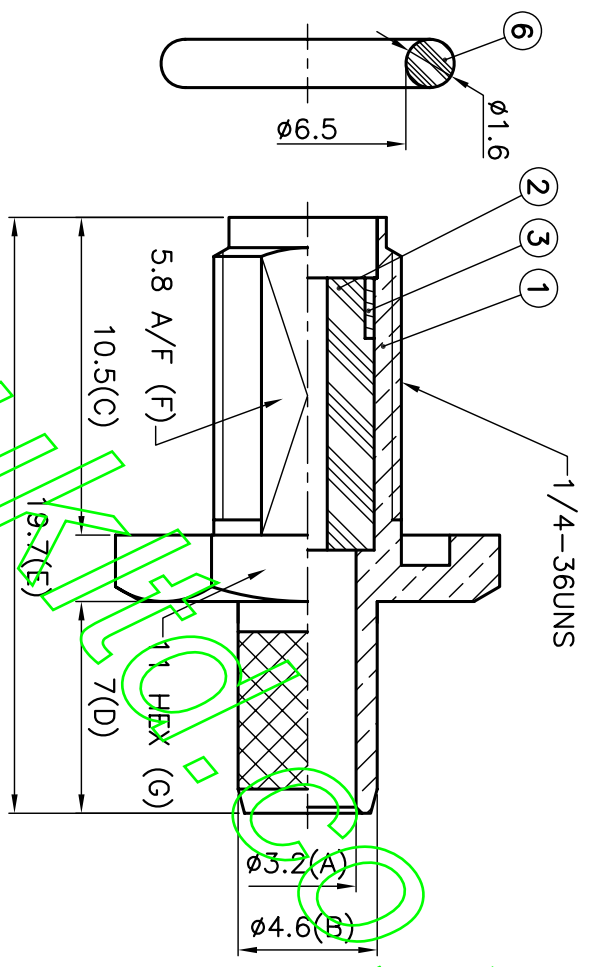
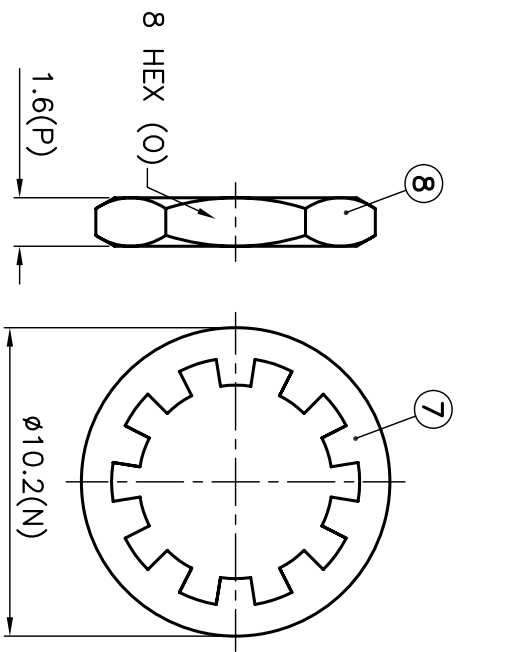


ISS	DESCRIPTION	DATE

REVISIONS

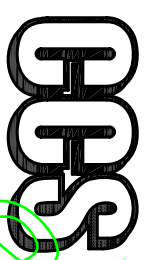
RoHS COMPLIANT



MOUNTING HOLE

1. CRIMPED FERRULE
HEX CRIMP SIZE: 21.5
2. CONTACT PIN TO SOLDER

CONNECTORS CABLES



TITLE: SMA FEMALE CRIMP B/H
(FOR RG223/U, 400/U)

PART NO: SMABJCR223

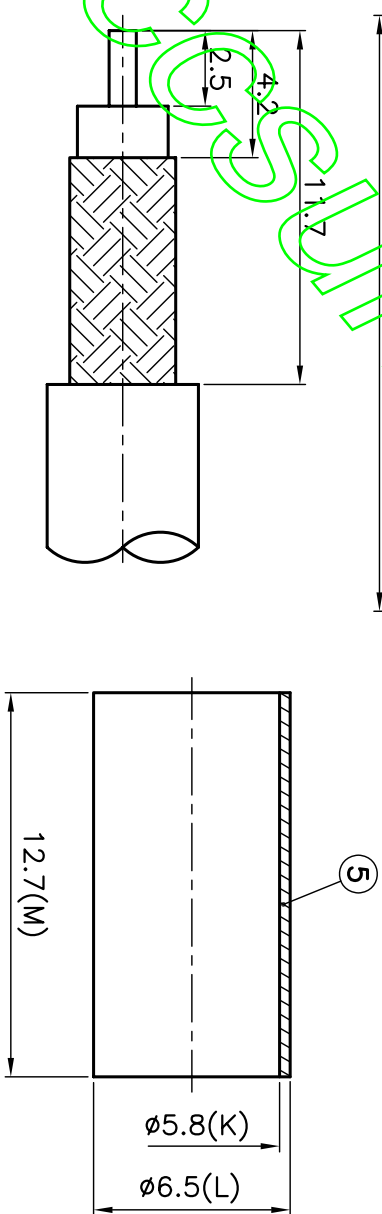
DRAWING NO: 53006-061 (S006B223) 029

APRD:	UNLESS OTHERWISE SPECIFIED TOLERANCES
CHKD:	0.5-6 = ±0.2
DR:	>6-30 = ±0.4
	>30-120 = ±0.6
	>120-315 = ±1.1
	>315-1000 = ±1.6
	ANGLES = ±1.6°

DATE: 10/25/10" UNIT: mm

SHEET: . SCALE: 4/1

RECOMMENDED
CABLE STRIPPING DIM'S



NO.	DESCRIPTION	MATERIAL	FINISH
1	INSULATOR	TEFLON	WHITE
2	LOCK RING	BRASS	GOLD
3	CONTACT PIN	PHOSPHOR BRONZE	GOLD
4	FERRULE	BRASS	GOLD
5	GASKET	SILICONE	RED
6	WASHER	STEEL	GOLD
7	NUT	BRASS	GOLD