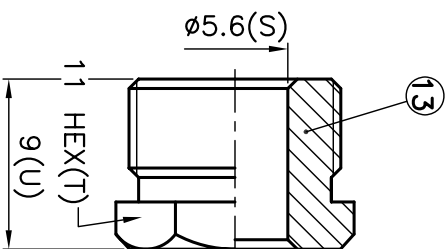
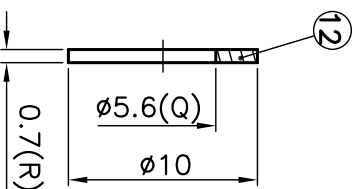
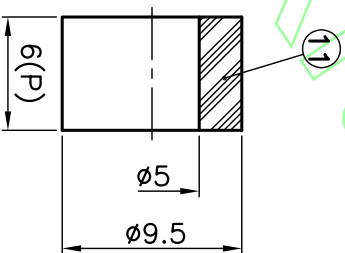
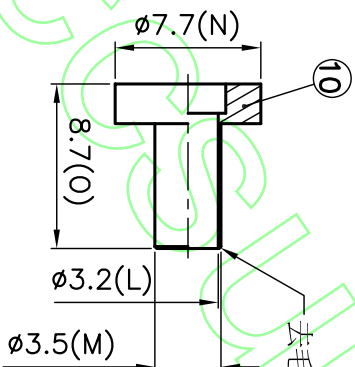
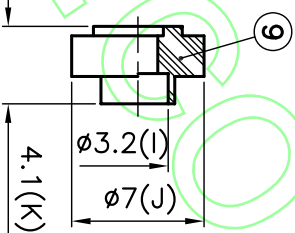
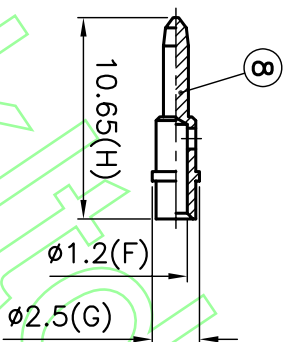
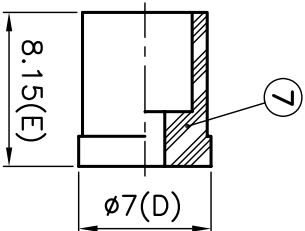
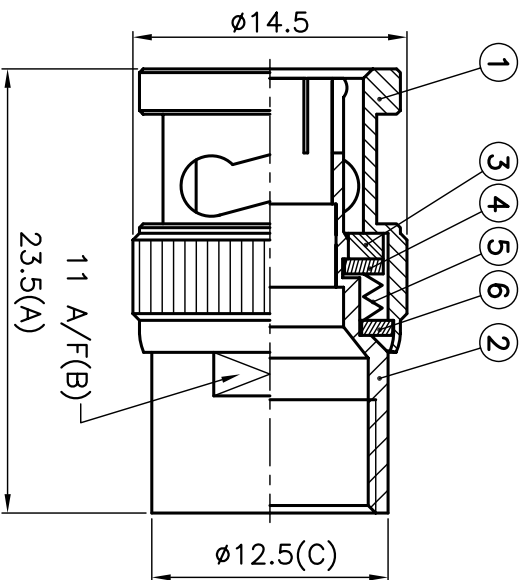


ISS	REVISIONS	DESCRIPTION \ DATE

RoHS COMPLIANT



**CONNECTORS CABLES**  
**HFS**  
**SPECIALISTS LTD.**

TITLE: BNC MALE CLAMP  
(FOR RG58/U)

APRD:	UNLESS OTHERWISE SPECIFIED TOLERANCES 0.5-6 = ±0.2 >6-30 = ±0.4 >30-120 = ±0.6 >120-315 = ±1.0 >315-1000 = ±1.6 ANGLES = ±5°
CHKD:	
DR:	

PART NO: BPSC58	DATE: 11/26/08"	UNIT: mm
DR. NO: 30	SHEET: 30	SCALE: 2.5/1

NO.	DESCRIPTION	MATERIAL	FINISH	NO.	DESCRIPTION	MATERIAL	FINISH
13	NUT	BRASS	NICKEL	KA/2005/10527	KA/2005/60362	BRASS	NICKEL
12	WASHER	BRASS	NICKEL	KA/2005/10527	KA/2005/60362	BRASS	NICKEL
11	GASKET	SILICONE	WHITE	KA/2005/10529		BRASS	NICKEL
10	TOP HAT	BRASS	NICKEL	KA/2005/10527	KA/2005/60362	BRASS	NICKEL
9	INSULATOR	TEFLON	WHITE	KA/2005/50918		BRASS	NICKEL
8	CONTACT PIN	BRASS	GOLD	KA/2005/10527	KA/2005/30993	BRASS	NICKEL
7	INSULATOR	TEFLON	WHITE	KA/2005/50918		BRASS	NICKEL
6	WASHER	STEEL	NICKEL	KA/2005/10523	KA/2005/60362	BRASS	NICKEL
5	SPRING	STEEL	NICKEL	KA/2005/10523	KA/2005/60362	BRASS	NICKEL
4	C WASHER	STEEL	NICKEL	KA/2005/10523	KA/2005/60362	BRASS	NICKEL
3	GASKET	SILICONE	RED	KA/2005/10529		BRASS	NICKEL
2	BODY	BRASS	NICKEL	KA/2005/10527	KA/2005/60362	BRASS	NICKEL
1	SHELL	BRASS	NICKEL	KA/2005/10527	KA/2005/60362	BRASS	NICKEL