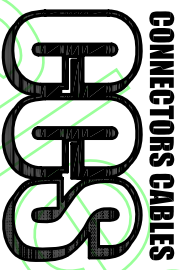
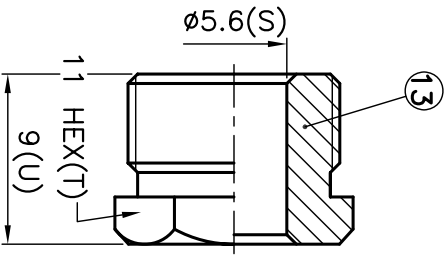
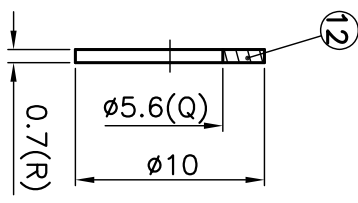
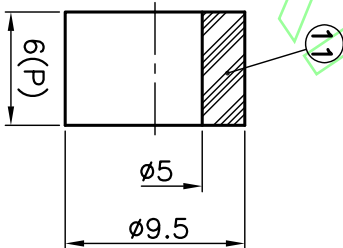
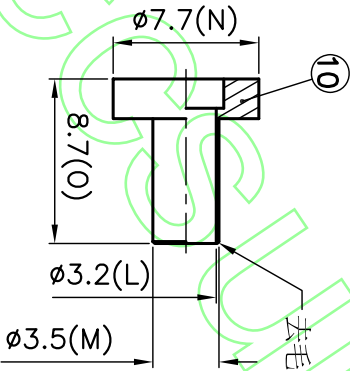
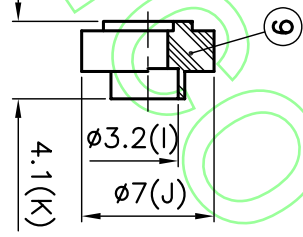
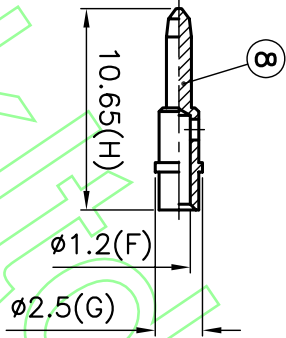
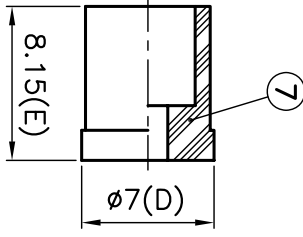
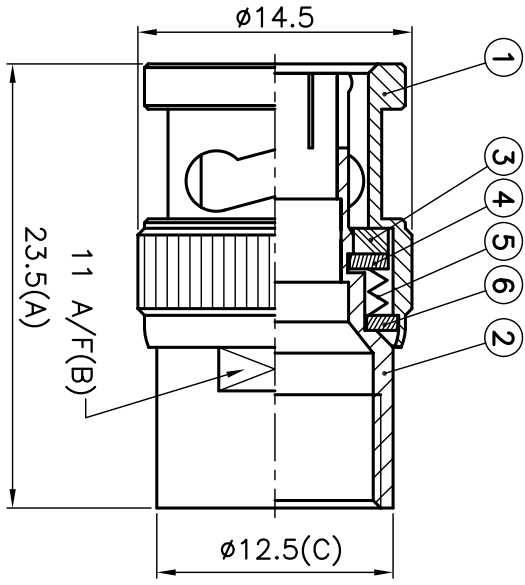


ISS	DESCRIPTION \ DATE

REVISIONS

ROHS COMPLIANT



TITLE: BNC MALE CLAMP

TO FIT RG223 RG400

PART NO: BPSC223

DR. NO: 30 SHEET: 30 DATE: 11/26/08" UNIT: mm SCALE: 2.5/1

APRD: UNLESS OTHERWISE SPECIFIED TOLERANCES  
 0.5-6 = ±0.2  
 >6-30 = ±0.4  
 >30-120 = ±0.6  
 >120-315 = ±1.0  
 >315-1000 = ±1.6  
 ANGLES = ±5°

CHKD:  
 DR:

NO.	DESCRIPTION	MATERIAL	FINISH	NO.	DESCRIPTION	MATERIAL	FINISH
13	NUT	BRASS	NICKEL	KA/2005/10527	KA/2005/60362	BRASS	NICKEL
12	WASHER	BRASS	NICKEL	KA/2005/10527	KA/2005/60362	BRASS	NICKEL
11	GASKET	SILICONE	WHITE	KA/2005/10529	KA/2005/60362	BRASS	NICKEL
10	TOP HAT	BRASS	NICKEL	KA/2005/10527	KA/2005/60362	BRASS	NICKEL
9	INSULATOR	TEFLON	WHITE	KA/2005/50918	KA/2005/60362	BRASS	NICKEL
8	CONTACT PIN	BRASS	GOLD	KA/2005/10527	KA/2005/30993	BRASS	NICKEL
7	INSULATOR	TEFLON	WHITE	KA/2005/10527	KA/2005/50918	BRASS	NICKEL
6	WASHER	STEEL	NICKEL	KA/2005/10523	KA/2005/60362	BRASS	NICKEL
5	SPRING	STEEL	NICKEL	KA/2005/10523	KA/2005/60362	BRASS	NICKEL
4	C WASHER	STEEL	NICKEL	KA/2005/10523	KA/2005/60362	BRASS	NICKEL
3	GASKET	SILICONE	RED	KA/2005/10529	KA/2005/60362	BRASS	NICKEL
2	BODY	BRASS	NICKEL	KA/2005/10527	KA/2005/60362	BRASS	NICKEL
1	SHELL	BRASS	NICKEL	KA/2005/10527	KA/2005/60362	BRASS	NICKEL