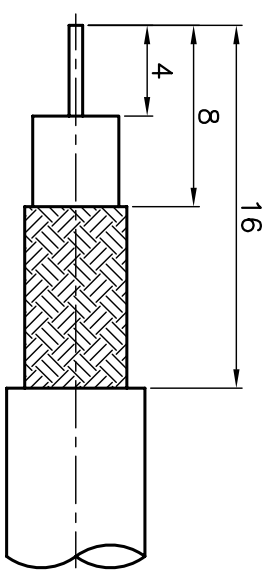
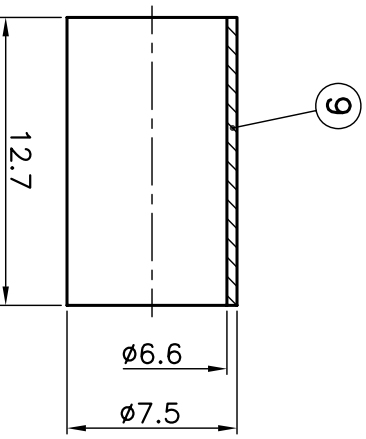
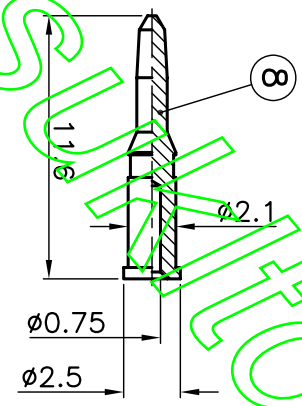
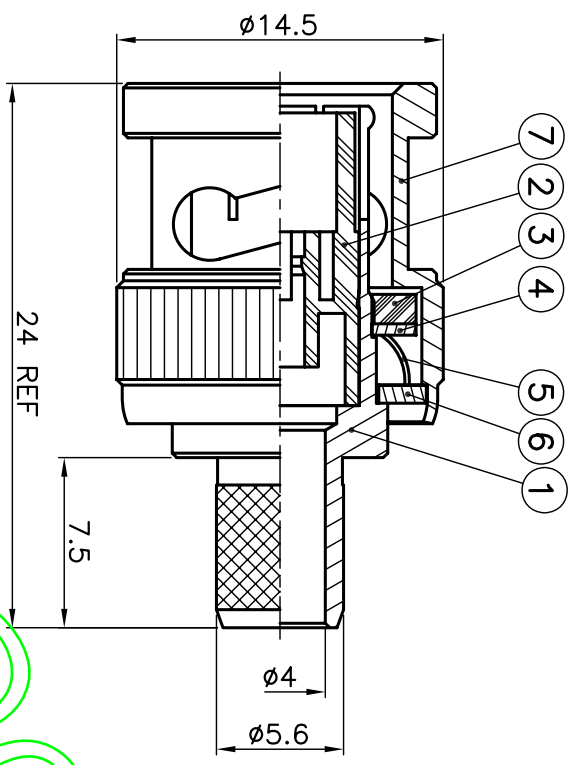


ISS	DESCRIPTION \ DATE

REVISIONS



RECOMMENDED  
CABLE STRIPPING DIM'S



1. CRIMPED FERRULE  
HEX CRIMP SIZE .255"
2. CRIMPED CONTACT PIN  
HEX CRIMP SIZE .068"

**CONNECTORS CABLES**  
**BHS**  
**SPECIALISTS LTD**

TITLE: BNC MALE CRIMP  
(FOR RG59)

APRD:	UNLESS OTHERWISE SPECIFIED TOLERANCES
CHKD:	0.5-6 = ±0.2
	>6-30 = ±0.4
	>30-120 = ±0.6
	>120-315 = ±1.0
	>315-1000 = ±1.6
	ANGLES = ±5°

PART NO: BPCR59  
DRAWING NO: . . . . .

DATE: 06/30/08"  
SHEET: . . . . .

UNIT: mm  
SCALE: 3/1

NO.	DESCRIPTION	MATERIAL	FINISH	SGS REPORT NO
9	FERRULE	BRASS	NICKEL	KA/2005/10527 \ KA/2005/60362
8	CONTACT PIN	BRASS	GOLD	KA/2005/10527 \ KA/2005/30993
7	SHELL	ZINC ALLOY	NICKEL	KA/2005/10528 \ KA/2005/60362
6	WASHER	STEEL	NICKEL	KA/2005/10523 \ KA/2005/60362
5	SPRING	SK-5	NICKEL	KA/2005/10524 \ KA/2005/60362
4	C WASHER	STEEL	NICKEL	KA/2005/10523 \ KA/2005/60362
3	GASKET	PVC	RED	KA/2005/10533
2	INSULATOR	DELTRIN	WHITE	KA/2005/10531
1	BODY	BRASS	NICKEL	KA/2005/10527 \ KA/2005/60362

sales@ccs-km.com