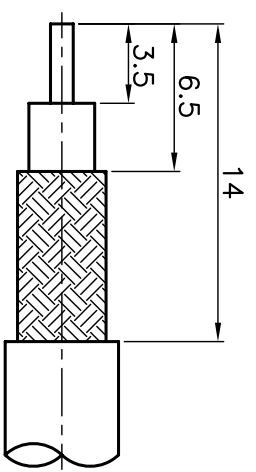
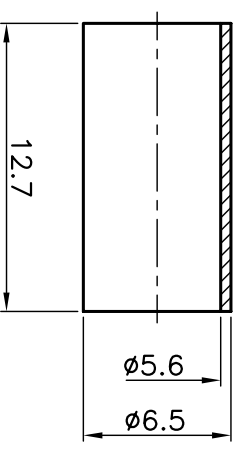
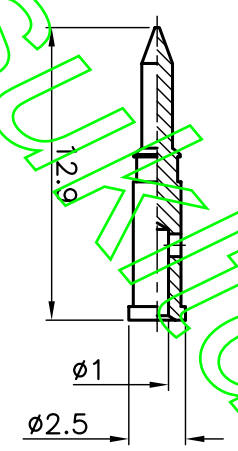
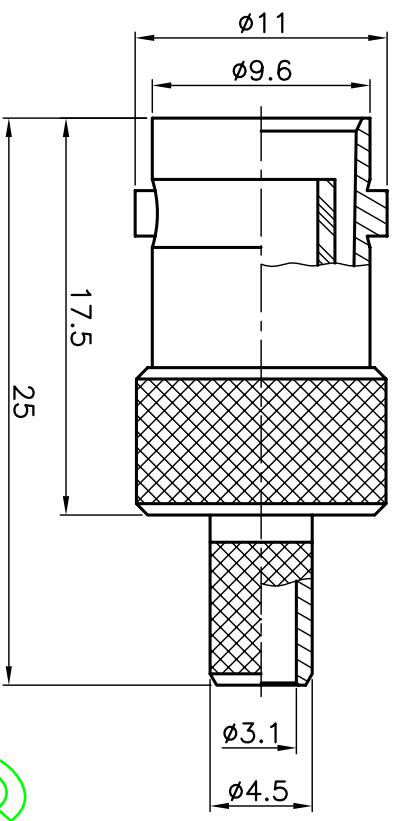


ISS	DESCRIPTION \ DATE

REVISIONS



RECOMMENDED  
CABLE STRIPPING DIM'S



1. CRIMPED FERRULE  
HEX CRIMP SIZE .213"
2. CRIMPED CONTACT PIN  
HEX CRIMP SIZE .068"

**CONNECTORS CABLES**  
**CCS**  
**SPECIALISTS LTD**

TITLE: R/P BNC FEMALE CRIMP  
(FOR RG58)

PART NO: BJCR58R

DR. NO: 1

APRD:	UNLESS OTHERWISE SPECIFIED TOLERANCES
CHKD:	0.5-6 = ±0.2
DR:	>6-30 = ±0.4
DATE: 10/30/09"	>30-120 = ±0.6
SHEET: .	>120-315 = ±1.1
	>315-1000 = ±1.6
	ANGLES = ±5°

NO.	DESCRIPTION	MATERIAL	FINISH
	FERRULE	BRASS	NICKEL
	CONTACT PIN	BRASS	GOLD
	LOCK WASHER	BRASS	NICKEL
	INSULATOR	TEFLON	WHITE
	BODY	BRASS	NICKEL
		MATERIAL	FINISH

ccs@csnkd.com

KUN-GO.COM